

# Greater Gallatin United Way



Greater Gallatin United Way works to improve lives by mobilizing the caring power of our communities.



## 2016-17 Community Impact Report

[www.GreaterGallatinUnitedWay.org](http://www.GreaterGallatinUnitedWay.org)

## From Our President & CEO

There are problems in our community that go unseen and people struggle to talk about. If we look deeply, I think we can recognize our own resistance to hardships whether they are with relationships, finances, mental illness or addiction. In some ways stigma can be even greater in communities that look and feel as vibrant and prosperous as ours. "If others seem to be 'making it,' then I must be doing something wrong and this is my own problem."

In reality, it is estimated by the U.S. Surgeon General that only 17% of U.S. adults are considered to be in a state of optimal mental health. That leaves most of us with room to improve! Nearly half of all Americans will experience depression, anxiety, addictions, substance use disorders, or other mental illness or behavioral health challenges at some point in their lives. Because we need to look like 'we've got it together' and symptoms of mental illness often go unrecognized, people struggling, on average, do not seek treatment for ten-years. Likewise, those facing financial hardship, homelessness, or relationship challenges may not seek support until the situation is dire.

Greater Gallatin United Way is restructuring our organization and our work to surround our community's most critical problems, shed light on these challenges, and help connect our community so no one experiencing difficulties feels isolated and without hope. Together we can reduce stigma and connect people sooner to resources that will improve their lives, which ultimately impacts the quality of life for everyone in our community. We invite you to join us... because change doesn't happen alone. Hope is not a one-man band. And there's no such thing as self-taught or self-made. We have one life. To live better, we must **LIVE UNITED**.

- Danica Jamison, President & CEO



## From Our Board Chair

It takes everyone pulling together to make our culture rich, our economy prosperous and our society humane. In a world of clashing ideas and fragmented attention, this isn't easy. Fortunately there are still organizations to draw diverse people together, build trust, find agreement and get to work.

United Way is such an organization. With support of individual donors, volunteers, businesses, foundations, public funders and human service agencies, we are positioned to ensure we live in communities where basic needs are met, children and youth succeed, seniors experience healthy aging and everyone realizes mental well-being and reaches their full potential.

When people like you join with Greater Gallatin United Way, we magnify our impact with our collective pool of dollars, volunteer time, advocacy, and shared ideals. Together we claim our stake in making our whole community stronger. Together we help individuals and families struggling today, and invest in social changes to prevent problems tomorrow.

We believe that as individuals, families and communities we are stronger if we support each other, especially in moments of vulnerability. We provide a way for people to connect and turn generosity into large-scale good. From small acts of kindness to coordinated, community-wide efforts, we hope you'll join us in improving lives.

- Mike Hegel, Board Chair, Northwestern Energy (Retired)



SW Montana is experiencing strong economic growth and low unemployment, yet many people are being left behind. Income disparities are widening and housing costs are high. Homelessness has increased, with many working homeless. Poverty exists and is growing, particularly among children and youth. A large number of our children enter kindergarten without the early literacy skills they need. Affordable, quality child care is difficult to access. Other social problems including substance abuse continue to plague our communities.

# 2017 Leadership

## Board Officers

- Mike Hegel, Northwestern Energy (Retired), Board Chair
- Scott Holton, Rudd & Company, First Vice Chair
- Patricia McKernan, Microbion Corp., Second Vice Chair
- Randi Gregg, Rudd & Company, Treasurer
- Shannon O'Hare, Stockman Bank, Co-Secretary
- Rob Watson, Bozeman School District #7, Co-Secretary

## Board

- Roland Bachmann, CRH - Trident
- Gale Bacon, Belgrade Community Library
- Canaan Bontadelli, Coffman Engineers
- Joe Cleveland, US Bank
- George Haddenhorst, Yellowstone Electric (Retired)
- Katharine Hamilton, Hamilton Law Firm, PLLC
- Amy Kanuch, Montana State University
- Matt Kelley, Gallatin City/County Health Department
- Rick Landers, Axilon Law Group
- Jen Nord, J.E.N. Consulting, LLC
- Steve Schmidt, Hope Lutheran Church
- Cindy Sease, Bozeman Daily Chronicle
- Leland Stocker, Belgrade Public Schools
- Kurt Thomson, Stahly Engineers

## Honorary Board Member

- Joe Billion, Billion Auto Group

## Board Meetings, Fiscal Year July, 2016 - June, 2017

July 7, 2016 | August 4, 2016 | September 1, 2016 | October 6, 2016  
November 3, 2016 | December 1, 2016 | January 5, 2017 | February 2, 2017

## Staff

- Danica Jamison, President & CEO
- Marjorie Seymour, Director of Development
- Megan Brenna, kidsLINK Afterschool Program Director
- Karen DeCotis, kidsLINK Afterschool Program Assistant
- Tyson Krinke, Community Impact Coordinator for Gallatin ECCC
- Sarah Webb, PROJECT LAUNCH Young Child Wellness Coordinator
- Kaylee Assibey, Accountant (Contract)
- Mahalia Pauls, Executive Assistant



## Who We Are

Greater Gallatin United Way Takes A Collective Approach to Community Problem Solving.

Established as United Way of Gallatin County, the first board meeting took place on September 14th, 1978 after Bozeman Chamber of Commerce hosted public comment on the concept of a centralized philanthropic organization for our community. The community recognized the power of collective giving and the effectiveness of solving complex community problems together. GGUW is part of a network of 1,800 United Ways in 41 countries and territories fighting for the education, health and financial

## What We Do

Collective Impact requires that everyone work together in partnership – businesses, cities, government, schools, faith-based institutions, foundations, and nonprofit organizations – to tackle our most pressing challenges and develop lasting solutions. By working this way, we all move together towards the same clear goal. Our work in the following four Community Impact Areas address Health, Education and Financial Stability so that every person in the communities we serve has the opportunity to live a better life.



### Basic Needs

Ensuring basic needs are met

- End homelessness and advance affordable housing options
- Eliminate food insecurity
- Access to affordable health care
- Promote 2-1-1 / Suicide Hotline + resource coordination



### Senior Stability

Promoting healthy aging

- Enhance senior mental and physical well-being
- Help seniors remain independent as long as possible
- Promote end-of-life education and support for seniors and care givers



### Children and Youth Success

Ensuring all children have the opportunity to reach their full potential

- Early literacy; children entering kindergarten are ready to learn
- Grade level reading by 3rd grade
- Access to quality affordable early child care, 0-5 years
- Access to quality affordable out-of-school-time/summer programming, 5+ years



### Mental Health and Well-Being

Ensuring every individual realizes his or her own potential and can contribute to the community

- Community outreach, education and awareness about mental health and mental illness
- Quality professional development for care providers
- Combat human trafficking/abuse and support survivors

## How We Do It

# GIVE.

We believe there is no problem that we can't solve together.

### Leadership Business Donors

|                            |                               |                                 |                                |
|----------------------------|-------------------------------|---------------------------------|--------------------------------|
| Alpine Security Storage    | Colombo's Pizza & Pasta       | Manhattan Bank                  | Simkins-Hallin Lumber Company  |
| Amatics CPA Group          | Costco                        | Mesa Laboratories, Inc.         | Southwestern Montana Financial |
| Anderson ZurMuehlen & Co   | CRH Trident                   | Montana Container Corp.         | Stifel Nicolaus                |
| AROD Management            | Dan Rust State Farm Insurance | Mountain Hot Tub, Inc.          | T D & H Engineering            |
| Axilon Law of Bozeman, PC  | Delta Airlines                | Murdoch's Ranch & Home Supply   | Takeda                         |
| Barnard Construction       | ERA Landmark Real Estate      | Northwest Farm Credit Services  | Target Stores                  |
| Bequet Confections         | Erotique                      | Northwestern Energy             | Tarlow & Stonecipher, PLLC     |
| Berg Law Firm              | Federal Express               | Opportunity Bank                | TowHaul Corporation            |
| Best Western Grantree Inn  | First Interstate Bank         | Outdoor Maintenance Service     | Universal Athletics Services   |
| Big Sky Western Bank       | First Security Bank           | Owenhouse Ace Hardware          | UPS (United Parcel Services)   |
| Billion Auto Group         | First West Insurance          | Pheasant Farms, LLC             | US Bank                        |
| Bozeman Health             | Gene Cook Real Estate         | Refling, Mark D. Attorney & Pam | Walmart                        |
| CenturyLink                | House of Clean                | Royal 7 Budget Inn              | Wells Fargo Bank               |
| Coffman Engineers          | J & H, Inc.                   | S & W Software, LLC             | Wild West Shirt Company        |
| Coldwell Banker RCI Realty | Macy's                        | Schafer Construction, Inc.      | Yellowstone Electric Company   |

### Foundations

21st Century Community Learning Centers  
Best Beginnings Council  
Bozeman Area Community Foundation  
Dennis & Phyllis Washington Foundation  
First Interstate Bank Foundation  
First Security Bank Foundation  
Gilhousen Family Foundation  
Montana DPHHS  
Montana Right Hand Foundation  
Mountain Sky Guest Ranch Foundation  
Mysun Foundation  
Pacer Foundation  
Susan Kay Pederson Foundation  
The Dairy Keep Project  
The Scoob Trust Foundation  
US Bank Foundation  
Walmart Foundation  
Wells Fargo Bank Foundation

### In-Kind Contributors

ABC Fox Montana  
Amatics CPA Group  
Bozeman Daily Chronicle  
Holiday Inn Bozeman  
Montana State University  
Montana Television Network-NBC & CBS

*"I give to Greater Gallatin United Way because I know that all of the dollars that I donate are used responsibly within the community in which I live and work." Jim*



# ADVOCATE.

Collective voices matter.

Greater Gallatin United Way board of directors, staff, donors, and community partners represent diverse perspectives. We work hard to find common ground solutions and advocate for policy change that supports our mission and improves lives.

# VOLUNTEER.

We can change the world by working together.

[www.VolunteerMT.org](http://www.VolunteerMT.org) is a free central online volunteer resource for all 501c3 organizations and community members.

- Provides a central resource for non-profit organizations and volunteers
- Connects people to quality opportunities to serve
- Builds capacity for local volunteering
- Raises awareness of the value volunteers bring to our communities
- Mobilizes volunteers to effectively and efficiently meet local needs

Greater Gallatin United Way's funded partners utilized 8,137 volunteers last year providing over 199,460 service hours at a value of over \$460,155!

*"I thought to myself, I've been giving for years, but there's so much more to be done. So I contacted Greater Gallatin United Way and recruited my co-workers to improve a shelter for victims of domestic violence. It felt awesome!" Monica*

## Greater Gallatin United Way work includes:

- I. Funding partner programs that are making a positive impact in basic needs, children and youth success, senior stability, and/or, mental health and well-being.
- II. Leading and convening coalitions to collectively solve problems and deliver greater positive impact for our communities. These include kidsLINK Afterschool, The Early Childhood Community Council, and a co-convening role to improve behavioral health.
- III. Administering programs that solve community needs, such as out-of-school time care for children through the kidsLINK Afterschool Program.
- IV. Advocating and exerting leverage to multiply our impact beyond dollars. We mobilize volunteers and their skills for a multitude of roles; rally funders around a common vision; and, we advocate for specific changes to public policy and systems that will benefit the most vulnerable.

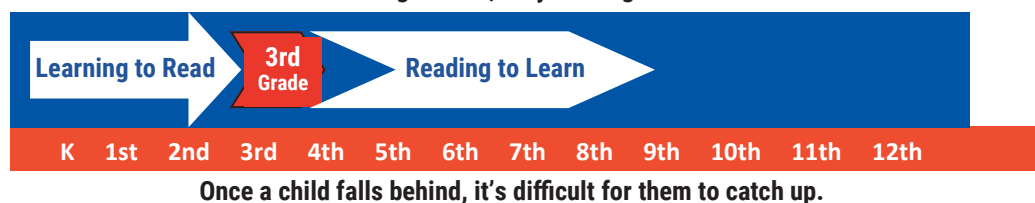


- All 56 counties in MT designated behavioral health as a top priority.
- MT has ranked in the top 5 states for suicide rates for over 40-years with a rate double the national average.
- MT ranks 47th for children living apart from their parents. 130% increase in foster care placements and 60% of these are due to drug and alcohol abuse/addiction.
- MT ranks 33rd for Long Term Care and 34th for Health. The World Health Organization's definition of health, "Health is a state of complete physical, mental and social well-being, not merely the absence of disease or infirmity."

## 4 Strategies To Ensure All Our Kids Enter School Ready to Learn and Are Reading At Grade Level:

- I. Pre-natal care ensures children are healthy and ready for school.
- II. Enriching environments with plenty of words and books enhance language and reading skills.
- III. Healthy educational activities during summer months decreases summer learning loss.
- IV. Regular school attendance keeps kids on track to continue learning with their peers.

**From birth to 3rd grade, children are learning to read.  
From 3rd grade on, they reading to learn.**



Children from low-income families are two-times more likely to have developmental delays; are behind 12-14 months in language and pre-reading skills upon entering kindergarten; lose 3 months of learning during the summer months; and are 2 to 2 1/2 years behind in critical reading skills by the end of 3rd grade. Children not reading at grade level reading by 3rd grade are 13 times more likely to drop out of school. Persons without a high school diploma are unqualified for 90% of available jobs.

## 5 Strategies To Improve Mental Health and Well-Being:

- I. Improve Access
- II. Enhance Coordination
- III. Support Providers
- IV. Advance Education and Awareness
- V. Ensure Effective Crisis Intervention

GGUW is helping to promote mental health education and awareness. During the 2016-17 fiscal year, GGUW held The Resilience Conference, professional development trainings, including ACEs for care givers, piloted mental health consultation for kidsLINK Afterschool staff, convened ECCC, partnered in Montana Project LAUNCH Initiative, co-hosted community showings of Screenagers, and other work. This year, GGUW is partnering with ten other agencies to improve five critical areas of opportunity to strengthen our behavioral health system.

GGUW is committed to find volunteers willing to lend a hand, combine voices to take a to stand, and raise every dollar we can to fight for the mental well-being of every person in our community.



## Greater Gallatin United Way's 2017-18 Community Impact Fund

We are proud to partner with and support the following service providers with resources including funding, leading and convening collaborative efforts, recruiting volunteers, and training and education on best practices. Together we are building strong and healthy communities. Greater Gallatin United Way has invested over \$14 Million into this region of Montana over the past 40 years.

**ASPEN:** Comprehensive support services to victims and survivors of domestic abuse and sexual violence; preventative educational and awareness activities.

**Befrienders:** Match community volunteers to seniors for companionship, support and advocacy.

**Belgrade Senior Center:** Services that foster independence for individuals aged 50 years and older.

**Big Brothers Big Sisters Park and Sweet Grass Counties:** Match children with trained mentors in and outside of school.

**Bozeman Senior Center - Senior Nutrition Program:** Meals-On-Wheels, walk-in meals and other supplemental food programs. Also, administer commodities for senior meal programs in Manhattan, Three Forks, and West Yellowstone.

**CASA / Guardian Ad Litem of Gallatin County:** Recruit, train, manage and administer volunteer advocates for abused and neglected children who have been removed from their home by the Eighteenth Judicial District Court.

**Child Care Connections:** Child care resource and referral agency, as well as education and advocacy for the early childhood profession.

**Community Health Partners - Dental Program:** Preventative and emergency oral health care in Gallatin and Park Counties.

**Community Mediation Center:** Low-income family mediation for families going through divorce.

**Family Promise of Gallatin Valley:** 90-day program through a network of interfaith organizations. Homeless families receive shelter, healthy meals, compassionate hospitality, case management and access to resources with the goal of employment and permanent, stable housing.

**Gallatin Valley YMCA Y-Achievers:** 6-week comprehensive summer learning program that targets 1st, 2nd and 3rd grade students that are reading below grade level.

**Gallatin Early Childhood Community Council:** Community-wide collaborative effort providing leadership to partners with the goal of creating an efficient, effective and comprehensive system of early childhood services in the Greater Gallatin area.

**Greater Gallatin United Way kidsLINK Afterschool:** Out-of-school-time program that operates in 29 school-based/linked locations across 4 counties. Program provides rich opportunities for learning, personal growth, and building relationships while supporting working families.

**Haven:** Intervention services for survivors and victims of domestic violence, as well as community outreach survivor-driven prevention programs.

**Help Center / 2-1-1:** Crisis hotline and referral services; walk-in counseling, suicide outreach services, and coordination of services for those in suicidal crisis. Child Advocacy Center provides child-focused intervention for child victims of sexual abuse. Hearts & Homes provides supervised visitation services. Sexual Assault Counseling Center provides crisis intervention, medical, personal, legal advocacy, outreach and trauma recovery counseling services. Hearts and Homes provides supervised visitation services. Telecare program provides daily safety checks and reminders to vulnerable clients.

**HRDC - Community Café Culinary Arts Training Program:** Culinary Arts Training, Youth at Higher Ground Coffee, and Gallatin Valley Manufacturing Partnership Summer Youth Boot Camp.

**HRDC - Food and Nutrition Program:** Gallatin Valley, Headwaters Area and Big Sky Community Food Banks.

**HRDC - Galavan:** Door-to-door transportation services in Bozeman and between Bozeman, Belgrade, Manhattan and Three Forks.

**HRDC - Homemaker Program:** In-home skilled nursing and homemaking services for low income, at risk seniors aged 60-years and older.

**HRDC - Housing First Program:** The Warming Center, Carriage House, Transition in Place Rapid Rehousing Program, and Emergency Rental Assistance.

**HRDC - Volunteer Income Tax Assistance (VITA):** Free tax help to people who make \$54,000 or less, persons with disabilities, the elderly and limited English speaking taxpayers who need assistance in preparing their tax returns.

**HRDC - Youth Transitional Housing:** Shelter to homeless youth and assistance transitioning to independent living.

**Little Rangers Learning Center:** An early learning and child care center in West Yellowstone that promotes creativity, independence and inquisitive learning.

**Livingston Food Pantry - Senior Dinners Program:** Frozen dinners, ready to heat-and-eat, delivered to low income seniors.

**Thrive:** Child Advancement Project, Girls for a Change, Girls on the Run, Partnership Project, Parent Liaison, and Parent Place.

**Women In Action Big Sky:** Mental health services with focus on drug and alcohol counseling.





Science tells us that brain development in a child's early years is critical for a strong start in life—and a strong start in life often leads to better outcomes all the way through. Reams of research, including by Nobel Prize-winning economist James Heckman, show that money spent on early childhood yields some of the strongest returns on investment of any social program. This is, therefore, a bedrock prevention strategy for us. Our work will continue to focus on the most vulnerable young children and their families.

## GGUW 2017 Financial Report

Donor trust is an outcome of nonprofit business excellence, transparency, and accountability. Our policies and procedures embody best practices and are updated regularly. Our organization conforms to Generally Accepted Accounting Principles. Our board reviews full financial statements quarterly. 3-years in a row, GGUW has been recognized for its strong governance and fiscal operations by Charity Navigator as a "Four Star Charity."

### Audited Financial Reports: Fiscal Year June 30, 2017

#### Statement of Financial Position (condensed)

|   |                    |
|---|--------------------|
| Current Assets                            | \$ 891,361         |
| Endowment Assets                          | \$ 445,278         |
| Other Assets                              | <u>\$ 55,853</u>   |
| <b>Total Assets</b>                       | <b>\$1,392,492</b> |
| Accounts Payable & Accrued Liabilities    | \$ 155,294         |
| Allocations Payable                       | \$ 337,000         |
| Net Assets                                | <u>\$ 900,198</u>  |
| <b>Total Liabilities &amp; Net Assets</b> | <b>\$1,392,492</b> |

#### Statement of Activities (condensed)

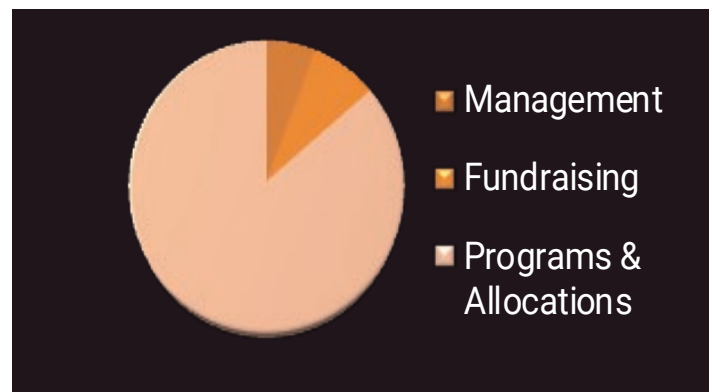
##### Support and Revenue

|                 |                    |
|-----------------|--------------------|
| Support Revenue | \$1,125,532        |
| Other Revenue   | <u>\$ 728,601</u>  |
| <b>Total</b>    | <b>\$1,854,133</b> |

##### Expenses

|                       |                    |
|-----------------------|--------------------|
| Program - Allocations | \$ 463,736         |
| Program               | \$1,106,998        |
| Fundraising           | \$ 153,990         |
| Management            | <u>\$ 113,237</u>  |
| <b>Total</b>          | <b>\$1,837,961</b> |

**Change in Net Assets** **\$ 16,172**



Independent audit was conducted by Amatics CPA Group

Full audit, management letter, and IRS 990 available by calling 406.587.2194 or online at [www.GreaterGallatinUnitedWay.org](http://www.GreaterGallatinUnitedWay.org)

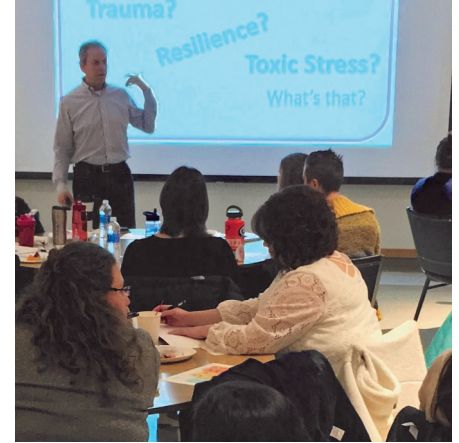
# We have one life. To live better, we must LIVE UNITED.



Over 3,000 children had safe enriching places to go in 29 kidsLINK Afterschool Programs



1,337 individuals generously gave what they could to support our community



GGUW hosted mental health and resilience-building trainings for 291 individuals



1,600 books were distributed to children promoting literacy and a love of reading



GGUW coordinated efforts to support the social emotional needs of 0-8 year olds & their families



10,630 people received emergency food supplies through area food banks



With GGUW support, seniors received delivered meals and other in-home support in Gallatin, Madison, Meagher and Park Counties



A strong Early Childhood Community Council with over 21 leaders advocated for children in our communities



14,876 individuals were served by the Help Center / 2-1-1